



MIPOLAM EVO

PVC-FREE HOMOGENEOUS FLOORING

gerflorusa.com



Gerflor[®]
theflooringgroup

HEALTHY INNOVATION. ALWAYS MIPOLAM.

Made in Germany from an exclusive blend of resins patented by Gerflor, MIPOLAM EVO is the best solution for clients looking for a PVC-free alternative. MIPOLAM EVO is the result of years of research carried out by our R&D experts to deliver a new generation of Mipolam homogeneous floors with continued focus on health and wellness. It provides the same superior technical and aesthetic performance as every Mipolam range.



STAIN BARRIER EASY MAINTENANCE MATTE EFFECT

Evercare™ surface treatment is a 100% non-porous surface, resistant to the harsh chemicals used in healthcare environments.



EASY TO INSTALL EASY TO COVE EASY TO WELD

Flexible and lightweight. PVC-free welding rods.



STRONG ADHESION TO SUBSTRATE

Adheres easily and permanently due to exclusive blend of patented resins.



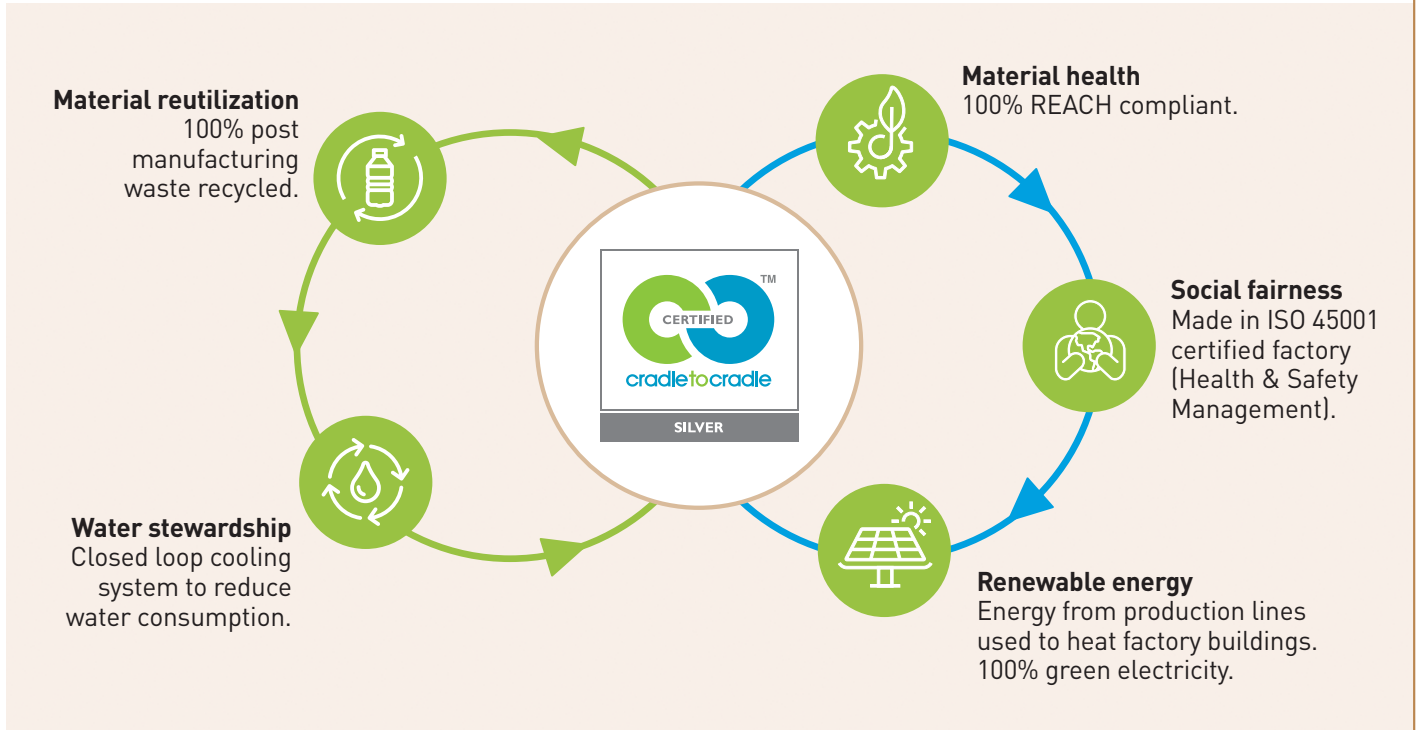
HIGH TRAFFIC RESISTANCE LONG LASTING DESIGN

R10 slip resistance rating. 0.08" (2.0mm) homogeneous construction.



CRADLE TO CRADLE CERTIFIED™

Mipolam Evo is Cradle to Cradle certified Silver, developed using circular economy principles and designed to make a positive impact on people and planet.



INDOOR AIR QUALITY

Mipolam Evo was developed with the consideration of promoting individual health and wellness within the built environment. As such, it has extremely low VOC emissions: TVOC <math>< 10 \mu\text{g}/\text{m}^3</math> (after 28 days) according to ISO 16000-6.



MIPOLAM EVO



9005 Visby
NCS: 1005-Y40R / LRV: 70.4



9031 Kiruna
NCS: 2005-Y40R / LRV: 52.4



9063 Narvik
NCS: 5005-Y20R / LRV: 22.6



9045 Gello
NCS: 7005-Y50R / LRV: 9.5



9008 Lulea

NCS: 2000-N / LRV: 56.9



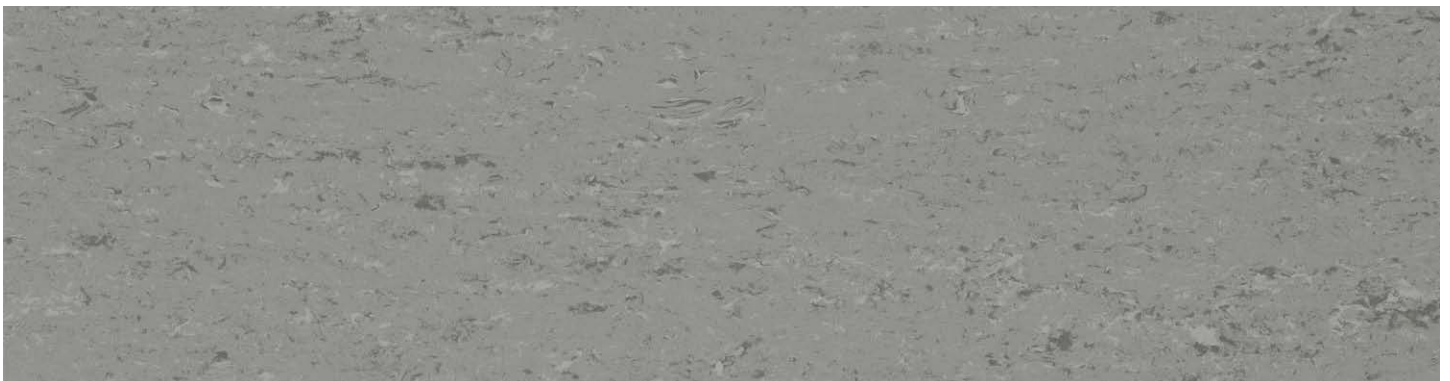
9009 Trondheim

NCS: 2500-N / LRV: 48.6



9029 Tromso

NCS: 4000-N / LRV: 31.7



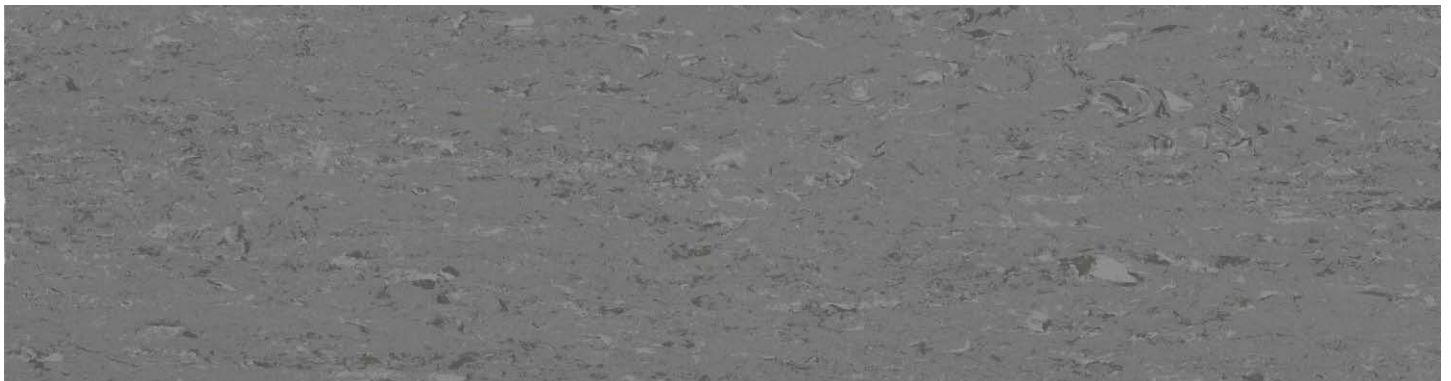
9030 Uppsala

NCS: 4502-R / LRV: 26.4

MIPOLAM EVO



9027 Oslo
9009 Trondheim



9050 Malmo
NCS: 6000-N / LRV: 16.2



9044 Bergen
NCS: 6502-Y / LRV: 12.6



9006 Stockholm
NCS: 2010-B / LRV: 48.7



9055 Goteborg
NCS: 3050-Y30R / LRV: 14.8




9032 Copenhagen
NCS: 1050-Y10R / LRV: 59.9



9027 Oslo
NCS: 2020-G40Y / LRV: 47.4

DESCRIPTION	STANDARDS	REQUIREMENTS	MIPOLAM EVO
PRODUCT DESCRIPTION			
Reference Specification	ASTM F1913	-	Meets Performance Requirements
Construction	-	-	PVC-Free Homogeneous Sheet Flooring
Surface Treatment / Maintenance	-	-	Evercare™ / No wax for life
Gauge Total Thickness	ASTM F386	> 0.075"	0.080" (2.0 mm)
Roll Width	-	-	6'6" (2.0 m)
Roll Length	-	-	66' (20 m)
Coverage / Roll	-	-	430.6 ft² (40 m²)
Weight	-	-	0.53 lb/ft² (2.6 kg/m²)
PERFORMANCE			
Static Load Resistance	ASTM F970	≤ 0.005"	Meets Requirements
Abrasion	ASTM F510	-	≤ -0.08" (≤ -2 mm)
Indentation - Residual	ASTM 1914	≤ 0.007"	Meets Requirements
	ISO 24343-1	≤ 0.10 mm	Meets Requirements
Flexibility	ASTM F137	> 1.5"	Meets Requirements
Chemical & Stain Resistance	ASTM F925	-	No Residual Stains, Excellent Results; Meets Requirements
Resistance to Heat	ASTM F1514	ΔE ≤ 8	Meets Requirements
Resistance to Light	ASTM F1515	ΔE ≤ 8	Meets Requirements
Coefficient of Friction	ASTM D2047	≥ 0.6	Meets Requirements
Fire Rating - Flame Spread	ASTM E648	Class 1	Meets Requirements
	CAN/ULC S102.2	-	Meets Requirements
Fire Rating - Smoke Evolution	ASTM E662/NFPA258	450 or less	Meets Requirements
ENVIRONMENT HEALTH & SAFETY			
Antibacterial Activity (E. Coli - S. Aureus - MRSA) after 24hr	ISO 22196	-	Inhibits Spread of Infections at 99% after 24hr*
Antiviral Activity (Human Coronavirus) after 5hr	ISO 21702	-	99.7% after 2hr / 99.9% after 5hr
Plant Certifications	-	-	ISO 14001, ISO 9001 OHSAS 18001
Production Waste	-	-	100% Manufacturing Waste Recycled
End of Life	-	-	100% Recyclable
MATERIALS & RESOURCES (MR)		LEED CONTRIBUTIONS	
Environmental Product Declaration (EPD)	LEED v4 MR BPDO	1 product	Product-Specific Type III
Material Ingredients: Health Product Declaration (HPD v2.1)	LEED v4 MR BPDO	1 product	Self-Declared
Material Ingredients: Cradle to Cradle Certification	LEED v4 MR BPDD	1 product	Third-party Certified: Silver
Material Ingredients: REACH Optimization	LEED v4 MR BPDO	Contributes in international projects	100% REACH Compliant
Sourcing of Raw Materials: Recycled Content	LEED v4 MR BPDO	Contributes	20% Pre-Consumer Content
Sourcing of Raw Materials: Regional Material	LEED v4 MR BPDO	Contributes	Manufactured in Troisdorf, Germany
INDOOR ENVIRONMENTAL QUALITY (IEQ)			
Low Emitting Materials: FloorScore® Certified	LEED v4 IEQ	Contributes	FloorScore® Certified CDPH Standard Method v1.2
Low Emitting Materials: TVOC after 28 days	ISO 16000-6	-	<10 µg/m³
WARRANTY	10-year limited manufacturer warranty when installed in accordance with Gerflor's installation instructions on gerflorusa.com		

* The best defense against the spread of infections is the implementation of an effective cleaning method.

 Rubber leaves indelible stains on synthetic floorings: do not use mats with rubber backing and replace tubular furniture feet with those made of PVC or polyamide. Place mats of sufficient length at entrances to reduce outside sources of dirt.



WE CARE | WE ACT. Our Commitments to a Sustainable future

 CARBON FOOTPRINT* -20% kg CO ₂ equivalent/m ² between 2020 and 2025	 BIOSOURCED CONTENT** 10% by 2025	 RECYCLED CONTENT 30% by 2025	 ADHESIVE FREE*** 35% by 2025	 ANNUAL VOLUME RECYCLED 60,000t by 2025
<small>* Scopes 1 and 2 defined in the GHG protocol ** % of activity with biosourced materials *** % of activity - adhesive free solution</small>				